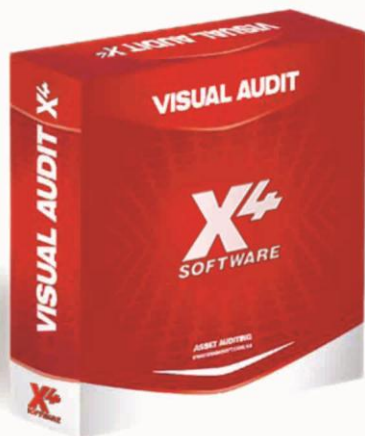


THE SKY'S THE LIMIT.

VISUAL AUDIT **X4** SOFTWARE

The Industry
Standard multi user
audit solution that
gets to the facts...
FAST!

Auditing your PCs with Visual Audit X4™ collects every piece of information on your IT assets and gives you the power to process virtually any request for information.



GET YOUR **FREE TRIAL**
www.softwarex4.com

If like most companies you're looking to cut costs, not jobs, then take a look at **Visual Audit X4™**.

It's a superb way to get the full facts on your IT assets helping to identify savings from over licensed software and remove the risk within your organization from software that's under licensed .

With the passage of time it's far too easy for an organisation to lose control of what IT assets are employed in their business.

This creates the potential for risk in terms of theft, misplacement, under insurance and of course software license infringement.

Install **Visual Audit X4™** and within minutes you're well on your way to collecting the details of all your hardware and software assets.

Having all this information together lets you get to grips with software licensing, maximise your IT budgets and make informed decisions about upgrades.

Visual Audit X4™ is a true SQL, multi user, audit solution packed with power. It's used as standard by thousands of organisations around the globe and has a pedigree born out of 15 years of audit tool development.

PC auditing is easy with **Visual Audit X4™!**

HOW IT WORKS

A simple installation guides you through either:

Installing SQL 2005 Server Express, the freely distributable Microsoft SQL tool, then a seamless install of Visual Audit X4™, followed by connection to your new SQL database.

Or for existing SQL Server Express, SQL 2000 or SQL Server 2005 users you can just install Visual Audit X4 and connect using your own SQL Server.

IT'S TIME TO AUDIT!

Once installed simply define your audit areas. This means deciding on where to run your audits from and where to store all your collected data.

Using Visual Audit X4's intuitive Audit Area Wizard just define the complexity and detail of your audit. You choose what additional user information to collect, what level of software and hardware to audit and any specific system file data, music, movie or other file types.

Once you've decided on your audit profile, you can audit PCs on demand at the click of a mouse or with a simple alteration to the login script have users regularly and automatically audited when they login to the network.

You can also configure X4 to push collected audit data back to a central location using TCPIP.

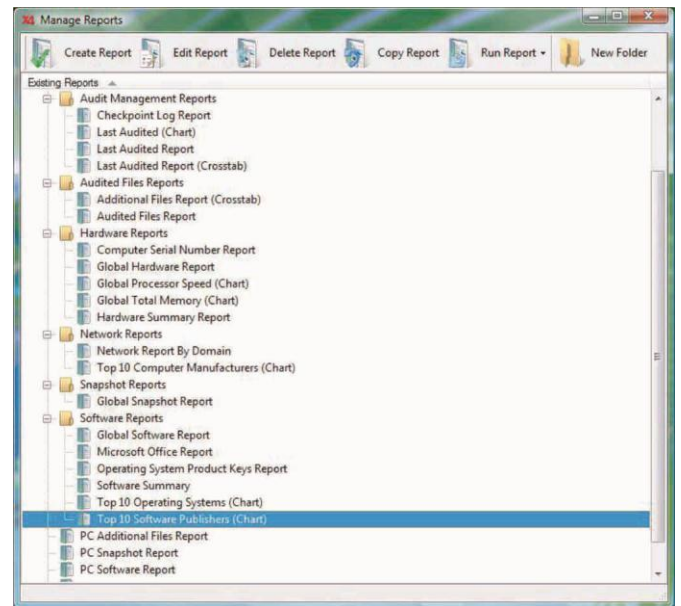
ANALYSIS

Last Audited	ID	Local IP address	Last Interactive User	Computer Vendor/Manufacturer	Computer Model	Windows Operating System
06/06/2008 10:04:59	AAA034	192.168.1.34	administrator	VIA Technologies Inc.	V78363	Microsoft Windows XP
23/07/2008 14:59:58	AAA044	192.168.1.44	administrator	Compaq	Deskpro	Microsoft Windows 2000
07/07/2008 16:43:30	AAA045	192.168.1.45	administrator	Compaq	Desktop E15	Microsoft Windows XP
29/07/2008 08:51:02	AAA048	192.168.1.48	administrator	Compaq	D50T	Microsoft Windows XP
28/07/2008 09:40:32	AAA050	192.168.1.50	administrator	Compaq	Evo D300	Microsoft Windows XP
07/07/2008 12:31:13	AAA052	169.254.2.2	administrator	Compaq	Evo D300	Microsoft Windows XP
25/07/2008 09:23:20	AAA061	192.168.1.61	administrator	Compaq	Evo D300	Microsoft Windows XP
22/07/2008 11:02:21	AAA062	192.168.1.62	administrator	Compaq	Evo D300	Microsoft Windows XP
25/07/2008 09:02:37	AAA063	192.168.1.63	administrator	Dell Computer Corporation	Dimension 2400	Microsoft Windows XP
22/07/2008 11:42:35	AAA065	192.168.1.65	Administrator	Microsoft Corporation	Virtual Machine	Microsoft Windows XP
28/07/2008 11:50:24	AAA066	192.168.1.66	administrator	Dell Inc.	Dimension C521	Microsoft Windows XP
29/07/2008 08:40:46	AAA067	192.168.1.67	administrator	Dell Inc.	Dimension C521	Microsoft Windows XP
28/07/2008 09:08:11	AAA068	192.168.1.68	administrator	Dell Inc.	Vostro 200	Microsoft Windows Vista
20/05/2008 15:08:14	AAA070	192.168.1.70	administrator	Dell Inc.	Vostro 200	Microsoft Windows Vista
14/04/2008 14:37:33	AAA070	192.168.1.104	administrator	Microsoft Corporation	Virtual Machine	Microsoft Windows Vista
27/07/2008 22:33:08	AAA124	192.168.0.12	administrator	AWARD	AWRDA0P1	Microsoft Windows XP
27/07/2008 22:30:28	AAA125	192.168.0.17	administrator	MSI	MS-7300	Microsoft Windows XP
27/07/2008 22:30:28	AAA140	192.168.0.14	administrator	Dell Inc.	Inspiron 6000	Microsoft Windows XP
27/06/2008 09:09:25	AAA255	192.168.1.114	administrator	Dell Computer Corporation	PowerEdge 1800	Microsoft Windows 2003
11/07/2008 09:47:45	VMSR-S...	192.168.1.102	Administrator	Microsoft Corporation	Virtual Machine	Microsoft Windows XP

Once your audit data has been collected and imported it is automatically calculated to give you your global totals. You will see the results of your entire network and can select any PC for individual analysis of installed Software, Software snapshot, Hardware and Licensing.

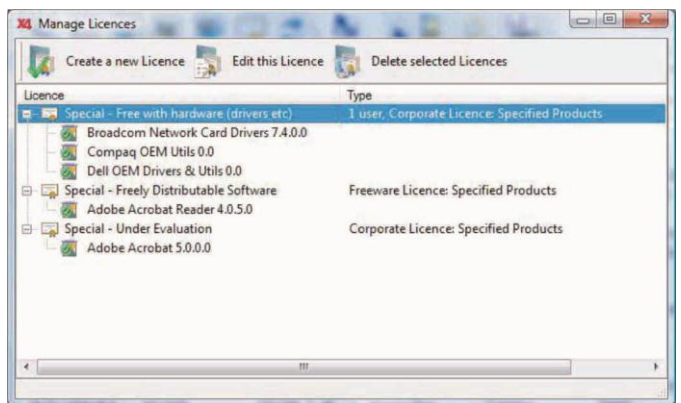
Visual Audit X4™ provides functionality to set up multiple tab views of your PC population. For example you may wish to view all PCs with Windows XP in one tab, with all Vista PCs in a separate tab. Criteria views can easily be shared with other users.

REPORTING



The new reporting engine allows you to combine the flexibility of SQL with the power of a modern drag and drop report builder. Of course, we also include a collection of pre-built reports which users can customise. As well as on screen and printed reports with customisable layouts, you can now export direct to excel and PDF (as well as the traditional csv and html exports).

LICENCE MANAGER



Visual Audit X4's built-in Licence manager lets you assign a whole range of licence types to your discovered software, giving you an instant overview of Licensed Software and Licence Violations. There's no need for an additional licence tool.



SoftwareX4 Limited
Falcongate House
Faraday Road
Harfreys Industrial Estate
Great Yarmouth
Norfolk
NR31 0NF
Tel: +44 (0) 1493 660330
E: Sales@SoftwareX4.com